

Features



Brackets included, except for models 10

Blind cap and air vent included, except for models 10

Technical characteristics

- Working pressure 10 bar
- Test pressure 13 bar
- Maximum operating temperature 110 °C
- For NF certification
see the website www.marque-nf.com

Standard equipment

- 4 x 1/2" connection, internal thread
- 1 blind cap 1/2" in the package; to be mounted
- 1 air vent 1/2" in the package; to be mounted.
- Superior grid
- Lateral side
- Brackets and supports
 - 2 or 3 GB brackets (depending on the number of welded supports) are provided for the types 11-21-22-33.
 - 4 welded supports up to and including a length of 1600 mm; over this, 6 supports
 - For models 10, the brackets D30 have to be ordered separately

Connection

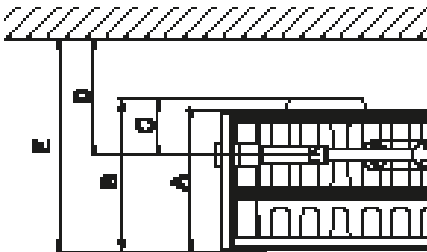
- Compact panel can be connected to a two-pipe installation with high/high same side, high/low opposite side or low/low opposite side connections. The two-pipe connection requires a valve and lockshield (not provided).
- Models 21-22-33 can also be connected to a one-pipe installation with a single connection, using the flow deviator. Models 10 and 11 can be connected to a one-pipe installation, but only with valve with external injection pipe.
- A one-pipe valve is not provided.

Safety

- Compact radiators cannot be inverted around any of the three axes.
- the sides of radiators are fastened with screws, safer than the interlocking system adopted on other panel radiators.

Optional

Brackets and optional accessories are available on dedicated pages.

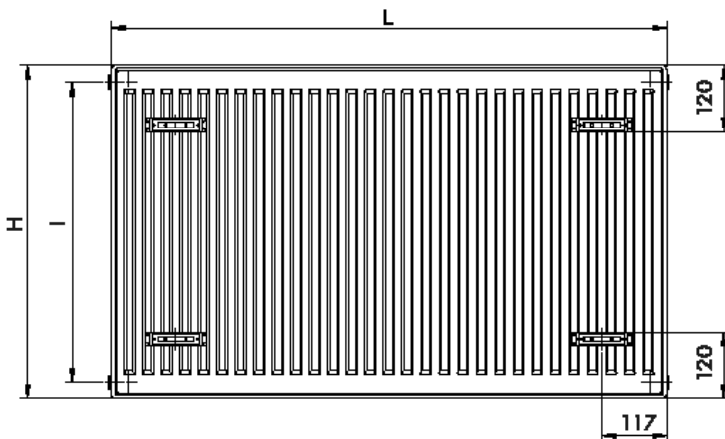


| | | Dimensions | | | | |
|--|---|------------|-------|---------|---------|---------|
| | | 10 | 11 | 21 | 22 | 33 |
| panel depth excluding back supports | A | 63 | 63 | 85 | 100 | 157 |
| total depth - from the back of the support to the front panel** | B | 63 | 75 | 94 | 109 | 166 |
| distance from the back support to the connection | C | - | 40 | 52 | 59 | 59 |
| distance from wall to the centre of the connection (mounting the radiators on the GB brackets provided)* | D | 34 | 54/64 | 68/76 | 75/83 | 75/83 |
| total distance from the wall to the front panel (panel mounted on the GP brackets provided as standard)* | E | 69 | 91/99 | 110/118 | 125/133 | 182/190 |

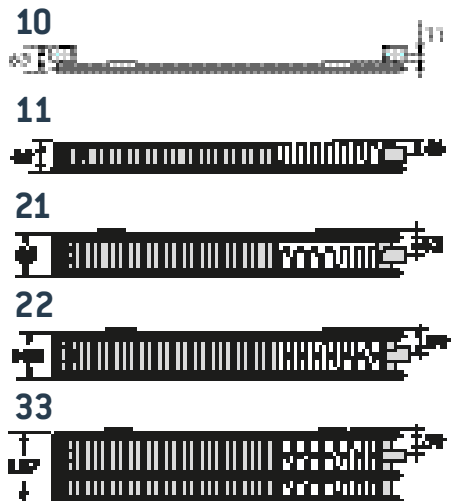
* The total distance varies according to whether the GB bracket is mounted in position A or position B (choice of depth), model 10 mounted on D30 brackets

** Calculating the total size of the panel (from the wall to the front panel) with the chosen wall brackets: the useful length of the chosen bracket must be added to this measurement (see brackets page).

Front view



Top view



Height (H) 300 - Tappings centre (I) 240

| | | 10 | | | 11 | | | 21 | | | 22 | | | 33 | | |
|--------------|-------|-----------------|-----------------|-----------------|-----------------|-----------------|-----------------|-----------------|-----------------|-----------------|-----------------|-----------------|-----------------|-----------------|-----------------|-----------------|
| Width (mm) | | 63 | | | 63 | | | 85 | | | 100 | | | 157 | | |
| Exponent (n) | | 1,34 | | | 1,257 | | | 1,260 | | | 1,297 | | | 1,272 | | |
| Length (mm) | | Output 75/65-20 | Output 70/55-20 | Output 55/45-20 | Output 75/65-20 | Output 70/55-20 | Output 55/45-20 | Output 75/65-20 | Output 70/55-20 | Output 55/45-20 | Output 75/65-20 | Output 70/55-20 | Output 55/45-20 | Output 75/65-20 | Output 70/55-20 | Output 55/45-20 |
| | | W | W | W | W | W | W | W | W | W | W | W | W | W | W | W |
| 400 | Power | 136 | 110 | 69 | 228 | 186 | 120 | 316 | 257 | 166 | 399 | 324 | 206 | 581 | 472 | 303 |
| | Code | 0181103012 | | | 0181243112 | | | 0181443112 | | | 0181543112 | | | 0181743112 | | |
| 500 | Power | 170 | 137 | 86 | 285 | 232 | 150 | 395 | 322 | 207 | 499 | 405 | 257 | 726 | 590 | 379 |
| | Code | 0181103015 | | | 0181243115 | | | 0181443115 | | | 0181543115 | | | 0181743115 | | |
| 600 | Power | 204 | 164 | 103 | 342 | 279 | 180 | 474 | 386 | 249 | 599 | 485 | 308 | 871 | 708 | 455 |
| | Code | 0181103018 | | | 0181243118 | | | 0181443118 | | | 0181543118 | | | 0181743118 | | |
| 700 | Power | 238 | 192 | 120 | 399 | 325 | 210 | 553 | 450 | 290 | 698 | 566 | 360 | 1016 | 826 | 531 |
| | Code | 0181103021 | | | 0181243121 | | | 0181443121 | | | 0181543121 | | | 0181743121 | | |
| 800 | Power | 272 | 219 | 137 | 456 | 372 | 240 | 632 | 515 | 332 | 798 | 647 | 411 | 1162 | 944 | 606 |
| | Code | 0181103024 | | | 0181243124 | | | 0181443124 | | | 0181543124 | | | 0181743124 | | |
| 900 | Power | 306 | 246 | 155 | 513 | 418 | 270 | 711 | 579 | 373 | 898 | 728 | 463 | 1307 | 1062 | 682 |
| | Code | 0181103027 | | | 0181243127 | | | 0181443127 | | | 0181543127 | | | 0181743127 | | |
| 1.000 | Power | 340 | 274 | 172 | 570 | 464 | 300 | 790 | 643 | 415 | 998 | 809 | 514 | 1452 | 1180 | 758 |
| | Code | 0181103030 | | | 0181243130 | | | 0181443130 | | | 0181543130 | | | 0181743130 | | |
| 1.100 | Power | 374 | 301 | 189 | 627 | 511 | 330 | 869 | 708 | 456 | 1097 | 890 | 565 | 1597 | 1298 | 834 |
| | Code | 0181103033 | | | 0181243133 | | | 0181443133 | | | 0181543133 | | | 0181743133 | | |
| 1.200 | Power | 408 | 329 | 206 | 684 | 557 | 360 | 948 | 772 | 498 | 1197 | 971 | 617 | 1742 | 1416 | 910 |
| | Code | 0181103036 | | | 0181243136 | | | 0181443136 | | | 0181543136 | | | 0181743136 | | |
| 1.400 | Power | 476 | 383 | 240 | 798 | 650 | 420 | 1105 | 901 | 581 | 1397 | 1133 | 720 | 2033 | 1651 | 1061 |
| | Code | 0181103042 | | | 0181243142 | | | 0181443142 | | | 0181543142 | | | 0181743142 | | |
| 1.600 | Power | 544 | 438 | 275 | 912 | 743 | 479 | 1263 | 1029 | 664 | 1596 | 1294 | 822 | 2323 | 1887 | 1213 |
| | Code | 0181103048 | | | 0181243148 | | | 0181443148 | | | 0181543148 | | | 0181743148 | | |
| 1.800 | Power | 612 | 493 | 309 | 1026 | 836 | 539 | 1421 | 1158 | 747 | 1796 | 1456 | 925 | 2614 | 2123 | 1364 |
| | Code | 0181103054 | | | 0181243154 | | | 0181443154 | | | 0181543154 | | | 0181743154 | | |
| 2.000 | Power | 680 | 548 | 343 | 1140 | 929 | 599 | 1579 | 1287 | 830 | 1995 | 1618 | 1028 | 2904 | 2359 | 1516 |
| | Code | 0181103060 | | | 0181243160 | | | 0181443160 | | | 0181543160 | | | 0181743160 | | |
| 2.300 | Power | 782 | 630 | 395 | 1311 | 1068 | 689 | 1816 | 1480 | 954 | 2294 | 1861 | 1182 | 3340 | 2713 | 1743 |
| | Code | 0181103069 | | | 0181243169 | | | 0181443169 | | | 0181543169 | | | 0181743169 | | |
| 2.600 | Power | 884 | 712 | 447 | 1482 | 1208 | 779 | 2053 | 1673 | 1079 | 2594 | 2104 | 1336 | 3775 | 3067 | 1971 |
| | Code | 0181103078 | | | 0181243178 | | | 0181443178 | | | 0181543178 | | | 0181743178 | | |
| 3.000 | Power | 1020 | 822 | 515 | 1710 | 1393 | 899 | 2369 | 1930 | 1245 | 2993 | 2427 | 1542 | 4356 | 3539 | 2274 |
| | Code | 0181103090 | | | 0181243190 | | | 0181443190 | | | 0181543190 | | | 0181743190 | | |

Height (H) 400 - Tappings centre (I) 340

| | | 10 | | | 11 | | | 21 | | | 22 | | | 33 | | |
|--------------|-------|-----------------|-----------------|-----------------|-----------------|-----------------|-----------------|-----------------|-----------------|-----------------|-----------------|-----------------|-----------------|-----------------|-----------------|-----------------|
| Width (mm) | | 63 | | | 63 | | | 85 | | | 100 | | | 157 | | |
| Exponent (n) | | 1,319 | | | 1,264 | | | 1,270 | | | 1,302 | | | 1,287 | | |
| Length (mm) | | Output 75/65-20 | Output 70/55-20 | Output 55/45-20 | Output 75/65-20 | Output 70/55-20 | Output 55/45-20 | Output 75/65-20 | Output 70/55-20 | Output 55/45-20 | Output 75/65-20 | Output 70/55-20 | Output 55/45-20 | Output 75/65-20 | Output 70/55-20 | Output 55/45-20 |
| | | W | W | W | W | W | W | W | W | W | W | W | W | W | W | W |
| 400 | Power | 177 | 142 | 90 | 283 | 230 | 147 | 400 | 337 | 209 | 498 | 403 | 256 | 720 | 583 | 373 |
| | Code | 0181104012 | | | 0181244112 | | | 0181444112 | | | 0181544112 | | | 0181744112 | | |
| 500 | Power | 221 | 178 | 112 | 354 | 287 | 184 | 501 | 422 | 262 | 623 | 504 | 320 | 900 | 729 | 466 |
| | Code | 0181104015 | | | 0181244115 | | | 0181444115 | | | 0181544115 | | | 0181744115 | | |
| 600 | Power | 265 | 214 | 135 | 425 | 345 | 221 | 601 | 506 | 314 | 747 | 605 | 384 | 1080 | 875 | 559 |
| | Code | 0181104018 | | | 0181244118 | | | 0181444118 | | | 0181544118 | | | 0181744118 | | |
| 700 | Power | 310 | 249 | 157 | 495 | 402 | 258 | 701 | 590 | 366 | 872 | 706 | 448 | 1260 | 1021 | 652 |
| | Code | 0181104021 | | | 0181244121 | | | 0181444121 | | | 0181544121 | | | 0181744121 | | |
| 800 | Power | 354 | 285 | 180 | 566 | 459 | 294 | 801 | 674 | 419 | 996 | 807 | 512 | 1440 | 1167 | 746 |
| | Code | 0181104024 | | | 0181244124 | | | 0181444124 | | | 0181544124 | | | 0181744124 | | |
| 900 | Power | 398 | 321 | 202 | 637 | 517 | 331 | 901 | 759 | 471 | 1121 | 908 | 576 | 1620 | 1313 | 839 |
| | Code | 0181104027 | | | 0181244127 | | | 0181444127 | | | 0181544127 | | | 0181744127 | | |
| 1.000 | Power | 442 | 356 | 225 | 708 | 574 | 368 | 1001 | 843 | 523 | 1245 | 1008 | 640 | 1800 | 1459 | 932 |
| | Code | 0181104030 | | | 0181244130 | | | 0181444130 | | | 0181544130 | | | 0181744130 | | |
| 1.100 | Power | 487 | 392 | 247 | 778 | 632 | 405 | 1101 | 927 | 576 | 1370 | 1109 | 704 | 1980 | 1604 | 1025 |
| | Code | 0181104033 | | | 0181244133 | | | 0181444133 | | | 0181544133 | | | 0181744133 | | |
| 1.200 | Power | 531 | 427 | 270 | 849 | 689 | 441 | 1201 | 1012 | 628 | 1494 | 1210 | 768 | 2160 | 1750 | 1118 |
| | Code | 0181104036 | | | 0181244136 | | | 0181444136 | | | 0181544136 | | | 0181744136 | | |
| 1.400 | Power | 619 | 499 | 315 | 991 | 804 | 515 | 1402 | 1180 | 732 | 1743 | 1412 | 896 | 2520 | 2042 | 1305 |
| | Code | 0181104042 | | | 0181244142 | | | 0181444142 | | | 0181544142 | | | 0181744142 | | |
| 1.600 | Power | 708 | 570 | 360 | 1132 | 919 | 589 | 1602 | 1349 | 837 | 1992 | 1614 | 1024 | 2880 | 2334 | 1491 |
| | Code | 0181104048 | | | 0181244148 | | | 0181444148 | | | 0181544148 | | | 0181744148 | | |
| 1.800 | Power | 796 | 641 | 405 | 1274 | 1034 | 662 | 1802 | 1517 | 942 | 2241 | 1815 | 1152 | 3240 | 2625 | 1678 |
| | Code | 0181104054 | | | 0181244154 | | | 0181444154 | | | 0181544154 | | | 0181744154 | | |
| 2.000 | Power | 885 | 712 | 450 | 1415 | 1148 | 736 | 2002 | 1686 | 1046 | 2490 | 2017 | 1280 | 3600 | 2917 | 1864 |
| | Code | 0181104060 | | | 0181244160 | | | 0181444160 | | | 0181544160 | | | 0181744160 | | |
| 2.300 | Power | 1017 | 819 | 517 | 1628 | 1321 | 846 | 2303 | 1939 | 1203 | 2864 | 2319 | 1472 | 4140 | 3355 | 2144 |
| | Code | 0181104069 | | | 0181244169 | | | 0181444169 | | | 0181544169 | | | 0181744169 | | |
| 2.600 | Power | 1150 | 926 | 585 | 1840 | 1493 | 957 | 2603 | 2192 | 1360 | 3237 | 2622 | 1664 | 4680 | 3792 | 2423 |
| | Code | 0181104078 | | | 0181244178 | | | 0181444178 | | | 0181544178 | | | 0181744178 | | |
| 3.000 | Power | 1327 | 1068 | 675 | 2123 | 1723 | 1104 | 3003 | 2529 | 1570 | 3735 | 3025 | 1920 | 5400 | 4376 | 2796 |
| | Code | 0181104090 | | | 0181244190 | | | 0181444190 | | | 0181544190 | | | 0181744190 | | |

Green cells: maximum lead time 2 weeks

Height (H) 500 - Tappings centre (H) 440

| | | 10 | | | 11 | | | 21 | | | 22 | | | 33 | | |
|--------------|-------|-----------------|-----------------|-----------------|-----------------|-----------------|-----------------|-----------------|-----------------|-----------------|-----------------|-----------------|-----------------|-----------------|-----------------|-----------------|
| Width (mm) | | 65 | | | 63 | | | 85 | | | 100 | | | 157 | | |
| Exponent (n) | | 1,299 | | | 1,270 | | | 1,280 | | | 1,307 | | | 1,324 | | |
| Lenght (mm) | | Output 75/65-20 | Output 70/55-20 | Output 55/45-20 | Output 75/65-20 | Output 70/55-20 | Output 55/45-20 | Output 75/65-20 | Output 70/55-20 | Output 55/45-20 | Output 75/65-20 | Output 70/55-20 | Output 55/45-20 | Output 75/65-20 | Output 70/55-20 | Output 55/45-20 |
| | | W | W | W | W | W | W | W | W | W | W | W | W | W | W | W |
| 400 | Power | 216 | 175 | 111 | 337 | 274 | 176 | 482 | 402 | 251 | 594 | 480 | 305 | 853 | 748 | 472 |
| | Code | 0181105012 | | | 0181245112 | | | 0181445112 | | | 0181545112 | | | 0181745112 | | |
| 500 | Power | 270 | 219 | 139 | 421 | 343 | 220 | 602 | 503 | 313 | 742 | 601 | 381 | 1066 | 935 | 590 |
| | Code | 0181105015 | | | 0181245115 | | | 0181445115 | | | 0181545115 | | | 0181745115 | | |
| 600 | Power | 324 | 262 | 167 | 505 | 411 | 264 | 723 | 604 | 376 | 891 | 721 | 457 | 1279 | 1122 | 707 |
| | Code | 0181105018 | | | 0181245118 | | | 0181445118 | | | 0181545118 | | | 0181745118 | | |
| 700 | Power | 379 | 306 | 195 | 590 | 480 | 308 | 843 | 704 | 438 | 1039 | 841 | 533 | 1492 | 1310 | 825 |
| | Code | 0181105021 | | | 0181245121 | | | 0181445121 | | | 0181545121 | | | 0181745121 | | |
| 800 | Power | 433 | 350 | 222 | 674 | 548 | 352 | 964 | 805 | 501 | 1188 | 961 | 609 | 1706 | 1497 | 943 |
| | Code | 0181105024 | | | 0181245124 | | | 0181445124 | | | 0181545124 | | | 0181745124 | | |
| 900 | Power | 487 | 394 | 250 | 758 | 617 | 396 | 1084 | 905 | 564 | 1336 | 1081 | 686 | 1919 | 1684 | 1061 |
| | Code | 0181105027 | | | 0181245127 | | | 0181445127 | | | 0181545127 | | | 0181745127 | | |
| 1.000 | Power | 541 | 437 | 278 | 842 | 685 | 440 | 1205 | 1006 | 626 | 1485 | 1201 | 762 | 2132 | 1871 | 1179 |
| | Code | 0181105030 | | | 0181245130 | | | 0181445130 | | | 0181545130 | | | 0181745130 | | |
| 1.100 | Power | 595 | 481 | 306 | 927 | 754 | 484 | 1325 | 1107 | 689 | 1633 | 1321 | 838 | 2345 | 2058 | 1297 |
| | Code | 0181105033 | | | 0181245133 | | | 0181445133 | | | 0181545133 | | | 0181745133 | | |
| 1.200 | Power | 649 | 525 | 334 | 1011 | 822 | 528 | 1446 | 1207 | 752 | 1782 | 1441 | 914 | 2558 | 2245 | 1415 |
| | Code | 0181105036 | | | 0181245136 | | | 0181445136 | | | 0181545136 | | | 0181745136 | | |
| 1.400 | Power | 757 | 612 | 389 | 1179 | 959 | 616 | 1686 | 1408 | 877 | 2079 | 1681 | 1067 | 2985 | 2619 | 1651 |
| | Code | 0181105042 | | | 0181245142 | | | 0181445142 | | | 0181545142 | | | 0181745142 | | |
| 1.600 | Power | 865 | 700 | 445 | 1348 | 1096 | 704 | 1927 | 1610 | 1002 | 2376 | 1922 | 1219 | 3411 | 2993 | 1886 |
| | Code | 0181105048 | | | 0181245148 | | | 0181445148 | | | 0181545148 | | | 0181745148 | | |
| 1.800 | Power | 973 | 787 | 501 | 1516 | 1233 | 792 | 2168 | 1811 | 1127 | 2672 | 2162 | 1371 | 3838 | 3367 | 2122 |
| | Code | 0181105054 | | | 0181245154 | | | 0181445154 | | | 0181545154 | | | 0181745154 | | |
| 2.000 | Power | 1082 | 874 | 556 | 1685 | 1370 | 880 | 2409 | 2012 | 1253 | 2969 | 2402 | 1524 | 4264 | 3742 | 2358 |
| | Code | 0181105060 | | | 0181245160 | | | 0181445160 | | | 0181545160 | | | 0181745160 | | |
| 2.300 | Power | 1244 | 1006 | 640 | 1937 | 1576 | 1012 | 2771 | 2314 | 1440 | 3415 | 2762 | 1752 | 4904 | 4303 | 2712 |
| | Code | 0181105069 | | | 0181245169 | | | 0181445169 | | | 0181545169 | | | 0181745169 | | |
| 2.600 | Power | 1406 | 1137 | 723 | 2190 | 1781 | 1144 | 3132 | 2616 | 1628 | 3860 | 3123 | 1981 | 5543 | 4864 | 3065 |
| | Code | 0181105078 | | | 0181245178 | | | 0181445178 | | | 0181545178 | | | 0181745178 | | |
| 3.000 | Power | 1622 | 1312 | 834 | 2527 | 2056 | 1320 | 3614 | 3018 | 1879 | 4454 | 3603 | 2285 | 6396 | 5612 | 3537 |
| | Code | 0181105090 | | | 0181245190 | | | 0181445190 | | | 0181545190 | | | 0181745190 | | |

Height (H) 600 - Tappings centre (H) 540

| | | 10 | | | 11 | | | 21 | | | 22 | | | 33 | | |
|--------------|-------|-----------------|-----------------|-----------------|-----------------|-----------------|-----------------|-----------------|-----------------|-----------------|-----------------|-----------------|-----------------|-----------------|-----------------|-----------------|
| Width (mm) | | 63 | | | 63 | | | 85 | | | 100 | | | 157 | | |
| Exponent (n) | | 1,279 | | | 1,276 | | | 1,290 | | | 1,312 | | | 1,318 | | |
| Lenght (mm) | | Output 75/65-20 | Output 70/55-20 | Output 55/45-20 | Output 75/65-20 | Output 70/55-20 | Output 55/45-20 | Output 75/65-20 | Output 70/55-20 | Output 55/45-20 | Output 75/65-20 | Output 70/55-20 | Output 55/45-20 | Output 75/65-20 | Output 70/55-20 | Output 55/45-20 |
| | | W | W | W | W | W | W | W | W | W | W | W | W | W | W | W |
| 400 | Power | 254 | 206 | 132 | 391 | 318 | 204 | 561 | 466 | 290 | 688 | 556 | 352 | 982 | 794 | 501 |
| | Code | 0181106012 | | | 0181246112 | | | 0181446112 | | | 0181546112 | | | 0181746112 | | |
| 500 | Power | 318 | 258 | 165 | 489 | 397 | 255 | 701 | 583 | 363 | 860 | 695 | 440 | 1227 | 992 | 626 |
| | Code | 0181106015 | | | 0181246115 | | | 0181446115 | | | 0181546115 | | | 0181746115 | | |
| 600 | Power | 381 | 310 | 198 | 586 | 477 | 305 | 842 | 700 | 435 | 1032 | 834 | 528 | 1472 | 1191 | 751 |
| | Code | 0181106018 | | | 0181246118 | | | 0181446118 | | | 0181546118 | | | 0181746118 | | |
| 700 | Power | 445 | 361 | 231 | 684 | 556 | 356 | 982 | 816 | 508 | 1204 | 973 | 616 | 1718 | 1389 | 876 |
| | Code | 0181106021 | | | 0181246121 | | | 0181446121 | | | 0181546121 | | | 0181746121 | | |
| 800 | Power | 509 | 413 | 265 | 782 | 635 | 407 | 1122 | 933 | 580 | 1376 | 1112 | 704 | 1963 | 1587 | 1002 |
| | Code | 0181106024 | | | 0181246124 | | | 0181446124 | | | 0181546124 | | | 0181746124 | | |
| 900 | Power | 572 | 465 | 298 | 880 | 715 | 458 | 1262 | 1049 | 653 | 1548 | 1251 | 792 | 2209 | 1786 | 1127 |
| | Code | 0181106027 | | | 0181246127 | | | 0181446127 | | | 0181546127 | | | 0181746127 | | |
| 1.000 | Power | 636 | 516 | 331 | 977 | 794 | 509 | 1402,5 | 1166 | 725 | 1720 | 1390 | 880 | 2454 | 1984 | 1252 |
| | Code | 0181106030 | | | 0181246130 | | | 0181446130 | | | 0181546130 | | | 0181746130 | | |
| 1.100 | Power | 699 | 568 | 364 | 1075 | 874 | 560 | 1543 | 1283 | 798 | 1892 | 1529 | 968 | 2699 | 2183 | 1377 |
| | Code | 0181106033 | | | 0181246133 | | | 0181446133 | | | 0181546133 | | | 0181746133 | | |
| 1.200 | Power | 763 | 619 | 397 | 1173 | 953 | 611 | 1683 | 1399 | 870 | 2064 | 1668 | 1056 | 2945 | 2381 | 1502 |
| | Code | 0181106036 | | | 0181246136 | | | 0181446136 | | | 0181546136 | | | 0181746136 | | |
| 1.400 | Power | 890 | 723 | 463 | 1368 | 1112 | 713 | 1964 | 1632 | 1015 | 2408 | 1946 | 1232 | 3436 | 2778 | 1753 |
| | Code | 0181106042 | | | 0181246142 | | | 0181446142 | | | 0181546142 | | | 0181746142 | | |
| 1.600 | Power | 1017 | 826 | 529 | 1564 | 1271 | 815 | 2244 | 1866 | 1161 | 2752 | 2223 | 1408 | 3926 | 3175 | 2003 |
| | Code | 0181106048 | | | 0181246148 | | | 0181446148 | | | 0181546148 | | | 0181746148 | | |
| 1.800 | Power | 1144 | 929 | 595 | 1759 | 1430 | 916 | 2525 | 2099 | 1306 | 3096 | 2501 | 1584 | 4417 | 3572 | 2254 |
| | Code | 0181106054 | | | 0181246154 | | | 0181446154 | | | 0181546154 | | | 0181746154 | | |
| 2.000 | Power | 1272 | 1032 | 661 | 1955 | 1589 | 1018 | 2805 | 2332 | 1451 | 3440 | 2779 | 1760 | 4908 | 3968 | 2504 |
| | Code | 0181106060 | | | 0181246160 | | | 0181446160 | | | 0181546160 | | | 0181746160 | | |
| 2.300 | Power | 1462 | 1187 | 760 | 2248 | 1827 | 1171 | 3226 | 2682 | 1668 | 3956 | 3196 | 2024 | 5644 | 4564 | 2880 |
| | Code | 0181106069 | | | 0181246169 | | | 0181446169 | | | 0181546169 | | | 0181746169 | | |
| 2.600 | Power | 1653 | 1342 | 860 | 2541 | 2065 | 1324 | 3647 | 3032 | 1886 | 4472 | 3613 | 2288 | 6380 | 5159 | 3255 |
| | Code | 0181106078 | | | 0181246178 | | | 0181446178 | | | 0181546178 | | | 0181746178 | | |
| 3.000 | Power | 1907 | 1549 | 992 | 2932 | 2383 | 1527 | 4208 | 3498 | 2176 | 5160 | 4169 | 2640 | 7362 | 5953 | 3756 |
| | Code | 0181106090 | | | 0181246190 | | | 0181446190 | | | 0181546190 | | | 0181746190 | | |

Green cells: maximum lead time 2 weeks

Height (H) 700 - Tappings centre (I) 640

| | | 10 | | | 11 | | | 21 | | | 22 | | | 33 | | |
|--------------|-------|--------------------|--------------------|--------------------|--------------------|--------------------|--------------------|--------------------|--------------------|--------------------|--------------------|--------------------|--------------------|--------------------|--------------------|--------------------|
| Width (mm) | | 63 | | | 63 | | | 85 | | | 100 | | | 157 | | |
| Exponent (n) | | 1,285 | | | 1,280 | | | 1,299 | | | 1,319 | | | 1,328 | | |
| Length (mm) | | Output 75/65-20 | Output 70/55-20 | Output 55/45-20 | Output 75/65-20 | Output 70/55-20 | Output 55/45-20 | Output 75/65-20 | Output 70/55-20 | Output 55/45-20 | Output 75/65-20 | Output 70/55-20 | Output 55/45-20 | Output 75/65-20 | Output 70/55-20 | Output 55/45-20 |
| | | W | W | W | W | W | W | W | W | W | W | W | W | W | W | W |
| 400 | Power | 291 | 237 | 151 | 446 | 362 | 232 | 638 | 529 | 335 | 781 | 630 | 398 | 1107 | 893 | 562 |
| | Code | 0181107012 | | | 0181247112 | | | 0181447112 | | | 0181547112 | | | 01817467112 | | |
| 500 | Power | 364 | 296 | 189 | 557 | 452 | 290 | 798 | 662 | 419 | 977 | 787 | 498 | 1384 | 1116 | 703 |
| | Code | 0181107015 | | | 0181247115 | | | 0181447115 | | | 0181547115 | | | 0181747115 | | |
| 600 | Power | 437 | 355 | 227 | 668 | 543 | 347 | 958 | 794 | 503 | 1172 | 944 | 597 | 1661 | 1340 | 844 |
| | Code | 0181107018 | | | 0181247118 | | | 0181447118 | | | 0181547118 | | | 0181747118 | | |
| 700 | Power | 509 | 414 | 265 | 780 | 633 | 405 | 1117 | 926 | 587 | 1367 | 1102 | 697 | 1938 | 1563 | 984 |
| | Code | 0181107021 | | | 0181247121 | | | 0181447121 | | | 0181547121 | | | 0181747121 | | |
| 800 | Power | 582 | 473 | 302 | 891 | 724 | 463 | 1277 | 1058 | 670 | 1562 | 1259 | 796 | 2214 | 1786 | 1125 |
| | Code | 0181107024 | | | 0181247124 | | | 0181447124 | | | 0181547124 | | | 0181747124 | | |
| 900 | Power | 655 | 532 | 340 | 1003 | 814 | 521 | 1436 | 1191 | 754 | 1758 | 1416 | 896 | 2491 | 2009 | 1265 |
| | Code | 0181107027 | | | 0181247127 | | | 0181447127 | | | 0181547127 | | | 0181747127 | | |
| 1.000 | Power | 728 | 591 | 378 | 1114 | 905 | 579 | 1596 | 1323 | 838 | 1953 | 1574 | 995 | 2768 | 2233 | 1406 |
| | Code | 0181107030 | | | 0181247130 | | | 0181447130 | | | 0181547130 | | | 0181747130 | | |
| 1.100 | Power | 800 | 650 | 416 | 1225 | 995 | 637 | 1756 | 1455 | 922 | 2148 | 1731 | 1095 | 3045 | 2456 | 1546 |
| | Code | 0181107033 | | | 0181247133 | | | 0181447133 | | | 0181547133 | | | 0181747133 | | |
| 1.200 | Power | 873 | 710 | 454 | 1337 | 1085 | 695 | 1915 | 1588 | 1006 | 2344 | 1889 | 1194 | 3322 | 2679 | 1687 |
| | Code | 0181107036 | | | 0181247136 | | | 0181447136 | | | 0181547136 | | | 0181747136 | | |
| 1.400 | Power | 1019 | 828 | 529 | 1559 | 1266 | 811 | 2234 | 1852 | 1173 | 2734 | 2203 | 1393 | 3875 | 3126 | 1968 |
| | Code | 0181107042 | | | 0181247142 | | | 0181447142 | | | 0181547142 | | | 0181747142 | | |
| 1.600 | Power | 1164 | 946 | 605 | 1782 | 1447 | 926 | 2554 | 2117 | 1341 | 3125 | 2518 | 1592 | 4429 | 3572 | 2249 |
| | Code | 0181107048 | | | 0181247148 | | | 0181447148 | | | 0181547148 | | | 0181747148 | | |
| 1.800 | Power | 1310 | 1064 | 680 | 2005 | 1628 | 1042 | 2873 | 2381 | 1508 | 3515 | 2833 | 1791 | 4982 | 4019 | 2531 |
| | Code | 0181107054 | | | 0181247154 | | | 0181447154 | | | 0181547154 | | | 0181747154 | | |
| 2.000 | Power | 1455 | 1183 | 756 | 2228 | 1809 | 1158 | 3192 | 2646 | 1676 | 3906 | 3148 | 1990 | 5536 | 4465 | 2812 |
| | Code | 0181107060 | | | 0181247160 | | | 0181447160 | | | 0181547160 | | | 0181747160 | | |
| 2.300 | Power | 1674 | 1360 | 869 | 2562 | 2081 | 1332 | 3671 | 3043 | 1927 | 4492 | 3620 | 2289 | 6366 | 5135 | 3234 |
| | Code | 0181107069 | | | 0181247169 | | | 0181447169 | | | 0181547169 | | | 0181747169 | | |
| 2.600 | Power | 1892 | 1537 | 983 | 2896 | 2352 | 1505 | 4150 | 3440 | 2179 | 5078 | 4092 | 2587 | 7197 | 5805 | 3655 |
| | Code | 0181107078 | | | 0181247178 | | | 0181447178 | | | 0181547178 | | | 0181747178 | | |
| 3.000 | Power | 2183 | 1774 | 1134 | 3342 | 2714 | 1737 | 4788 | 3969 | 2514 | 5859 | 4721 | 2985 | 8304 | 6698 | 4218 |
| | Code | 0181107090 | | | 0181247190 | | | 0181447190 | | | 0181547190 | | | 0181747190 | | |

Height (H) 900 - Tappings centre (I) 840

| | | 10 | | | 11 | | | 21 | | | 22 | | | 33 | | |
|--------------|-------|--------------------|--------------------|--------------------|--------------------|--------------------|--------------------|--------------------|--------------------|--------------------|--------------------|--------------------|--------------------|--------------------|--------------------|--------------------|
| Width (mm) | | 63 | | | 63 | | | 85 | | | 100 | | | 157 | | |
| Exponent (n) | | 1,296 | | | 1,288 | | | 1,315 | | | 1,334 | | | 1,348 | | |
| Length (mm) | | Output 75/65-20 | Output 70/55-20 | Output 55/45-20 | Output 75/65-20 | Output 70/55-20 | Output 55/45-20 | Output 75/65-20 | Output 70/55-20 | Output 55/45-20 | Output 75/65-20 | Output 70/55-20 | Output 55/45-20 | Output 75/65-20 | Output 70/55-20 | Output 55/45-20 |
| | | W | W | W | W | W | W | W | W | W | W | W | W | W | W | W |
| 400 | Power | 361 | 293 | 186 | 558 | 453 | 289 | 790 | 654 | 403 | 968 | 778 | 490 | 1354 | 1086 | 680 |
| | Code | 0181109012 | | | 0181249112 | | | 0181449112 | | | 0181549112 | | | 0181749112 | | |
| 500 | Power | 451 | 366 | 233 | 698 | 566 | 361 | 987 | 817 | 504 | 1210 | 973 | 612 | 1692 | 1358 | 850 |
| | Code | 0181109015 | | | 0181249115 | | | 0181449115 | | | 0181549115 | | | 0181749115 | | |
| 600 | Power | 541 | 439 | 280 | 837 | 679 | 433 | 1184 | 980 | 605 | 1452 | 1168 | 734 | 2030 | 1629 | 1019 |
| | Code | 0181109018 | | | 0181249118 | | | 0181449118 | | | 0181549118 | | | 0181749118 | | |
| 700 | Power | 632 | 512 | 326 | 977 | 792 | 505 | 1382 | 1144 | 706 | 1694 | 1362 | 857 | 2369 | 1901 | 1189 |
| | Code | 0181109021 | | | 0181249121 | | | 0181449121 | | | 0181549121 | | | 0181749121 | | |
| 800 | Power | 722 | 586 | 373 | 1116 | 905 | 578 | 1579 | 1307 | 806 | 1936 | 1557 | 979 | 2707 | 2172 | 1359 |
| | Code | 0181109024 | | | 0181249124 | | | 0181449124 | | | 0181549124 | | | 0181749124 | | |
| 900 | Power | 812 | 659 | 420 | 1256 | 1018 | 650 | 1776 | 1471 | 907 | 2178 | 1752 | 1102 | 3046 | 2444 | 1529 |
| | Code | 0181109027 | | | 0181249127 | | | 0181449127 | | | 0181549127 | | | 0181749127 | | |
| 1.000 | Power | 902,4 | 732 | 466 | 1395 | 1131 | 722 | 1974 | 1634 | 1008 | 2420 | 1946 | 1224 | 3384 | 2715 | 1699 |
| | Code | 0181109030 | | | 0181249130 | | | 0181449130 | | | 0181549130 | | | 0181749130 | | |
| 1.100 | Power | 993 | 805 | 513 | 1535 | 1244 | 794 | 2171 | 1797 | 1109 | 2662 | 2141 | 1346 | 3722 | 2987 | 1869 |
| | Code | 0181109033 | | | 0181249133 | | | 0181449133 | | | 0181549133 | | | 0181749133 | | |
| 1.200 | Power | 1083 | 879 | 559 | 1674 | 1358 | 867 | 2369 | 1961 | 1210 | 2904 | 2335 | 1469 | 4061 | 3259 | 2039 |
| | Code | 0181109036 | | | 0181249136 | | | 0181449136 | | | 0181549136 | | | 0181749136 | | |
| 1.400 | Power | 1263 | 1025 | 653 | 1953 | 1584 | 1011 | 2763 | 2288 | 1411 | 3388 | 2725 | 1714 | 4738 | 3802 | 2379 |
| | Code | 0181109042 | | | 0181249142 | | | 0181449142 | | | 0181549142 | | | 0181749142 | | |
| 1.600 | Power | 1444 | 1171 | 746 | 2232 | 1810 | 1155 | 3158 | 2614 | 1613 | 3872 | 3114 | 1958 | 5414 | 4345 | 2718 |
| | Code | 0181109048 | | | 0181249148 | | | 0181449148 | | | 0181549148 | | | 0181749148 | | |
| 1.800 | Power | 1624 | 1318 | 839 | 2511 | 2036 | 1300 | 3553 | 2941 | 1814 | 4356 | 3503 | 2203 | 6091 | 4888 | 3058 |
| | Code | 0181109054 | | | 0181249154 | | | 0181449154 | | | 0181549154 | | | 0181749154 | | |
| 2.000 | Power | 1805 | 1464 | 932 | 2790 | 2263 | 1444 | 3948 | 3268 | 2016 | 4840 | 3892 | 2448 | 6768 | 5431 | 3398 |
| | Code | 0181109060 | | | 0181249160 | | | 0181449160 | | | 0181549160 | | | 0181749160 | | |
| 2.300 | Power | 2076 | 1684 | 1072 | 3209 | 2602 | 1661 | 4540 | 3758 | 2318 | 5566 | 4476 | 2815 | 7783 | 6246 | 3908 |
| | Code | 0181109069 | | | 0181249169 | | | 0181449169 | | | 0181549169 | | | 0181749169 | | |
| 2.600 | Power | 2346 | 1904 | 1212 | 3627 | 2941 | 1877 | 5132 | 4248 | 2621 | 6292 | 5060 | 3182 | 8798 | 7060 | 4417 |
| | Code | 0181109078 | | | 0181249178 | | | 0181449178 | | | 0181549178 | | | 0181749178 | | |
| 3.000 | Power | 2707 | 2196 | 1399 | 4185 | 3394 | 2166 | 5921 | 4902 | 3024 | 7260 | 5838 | 3672 | 10152 | 8146 | 5097 |
| | Code | 0181109090 | | | 0181249190 | | | 0181449190 | | | 0181549190 | | | 0181749190 | | |

Green cells: maximum lead time 2 weeks